

Kuali Student is a next-generation *student information system* that will provide the foundation for *transforming* the learning experience at UBC.

What is Kuali Student?

Kuali Student is a flexible, adaptable **student information system** that can be configured to meet UBC's unique business requirements. It will allow for better tracking of educational outcomes against expected performance - improving the educational experience for the UBC community.



How is UBC involved in Kuali Student?

UBC is a founding member of a consortium of leading institutions working collaboratively to build Kuali Student on open-source software infrastructure. UBC has an integral role in the development of Kuali Student.

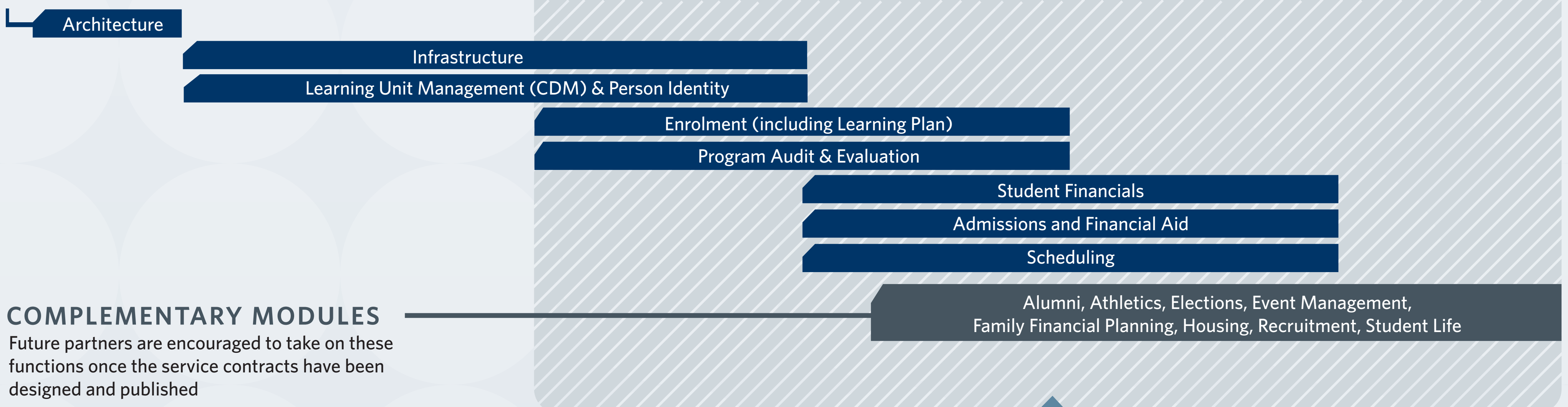
When will Kuali Student be at UBC?

Kuali Student is being developed and released in a modular approach. The first module, Curriculum Development and Management (CDM), is tentatively scheduled for piloting in faculties beginning in late 2010.



FOUNDER & PARTNER SCOPE

The core functionality that the founders/partners are committed to developing and implementing as first priority



COMPLEMENTARY MODULES

Future partners are encouraged to take on these functions once the service contracts have been designed and published

CONNECTORS TO OTHER SYSTEMS

To be developed along with the appropriate KS module

Facilities Management, Financial System, Learning Management System, Library System, Parking System, Student Portfolio

Enhancing the educational experience for the UBC community

The Kuali Student @UBC project team will be working with you – the UBC community – to gather requirements, and to develop business processes, rules, and workflow.

Curriculum Development and Management (CDM)

The first module of Kuali Student is Curriculum Development and Management (CDM). It will shift the course-approval process from a paper-based format to an online one, creating a seamless system for departments and users across campus and enhancing the current curriculum-approval process.

CDM will also support new types of learning at UBC by accommodating different curricular formats. As learning experiences continue to evolve, Kuali Student will be in the forefront – with the functionality to adapt.

The flexible *learning unit* concept in Kuali Student will support new ways for UBC to think about *student learning* experiences.



The CDM module will support *new information* associated with a course. Users won't need workarounds and shadow systems to truly represent *student learning* experiences.

The Kuali team is working with the UBC community to influence the direction of the project.



The CDM module will be piloted with:


- The Faculty of Land and Food Systems
- The Faculty of Science
- UBC Okanagan faculty

Kuali Student will support collaboration by engaging the UBC community in its development and implementation. As each module becomes available, the implementation team will configure it to UBC specifications to meet the needs of all end users, which will enhance streamlining and integration of current systems.

The UBC community will be involved in ongoing usability testing with the goal to create a system that works for everyone.

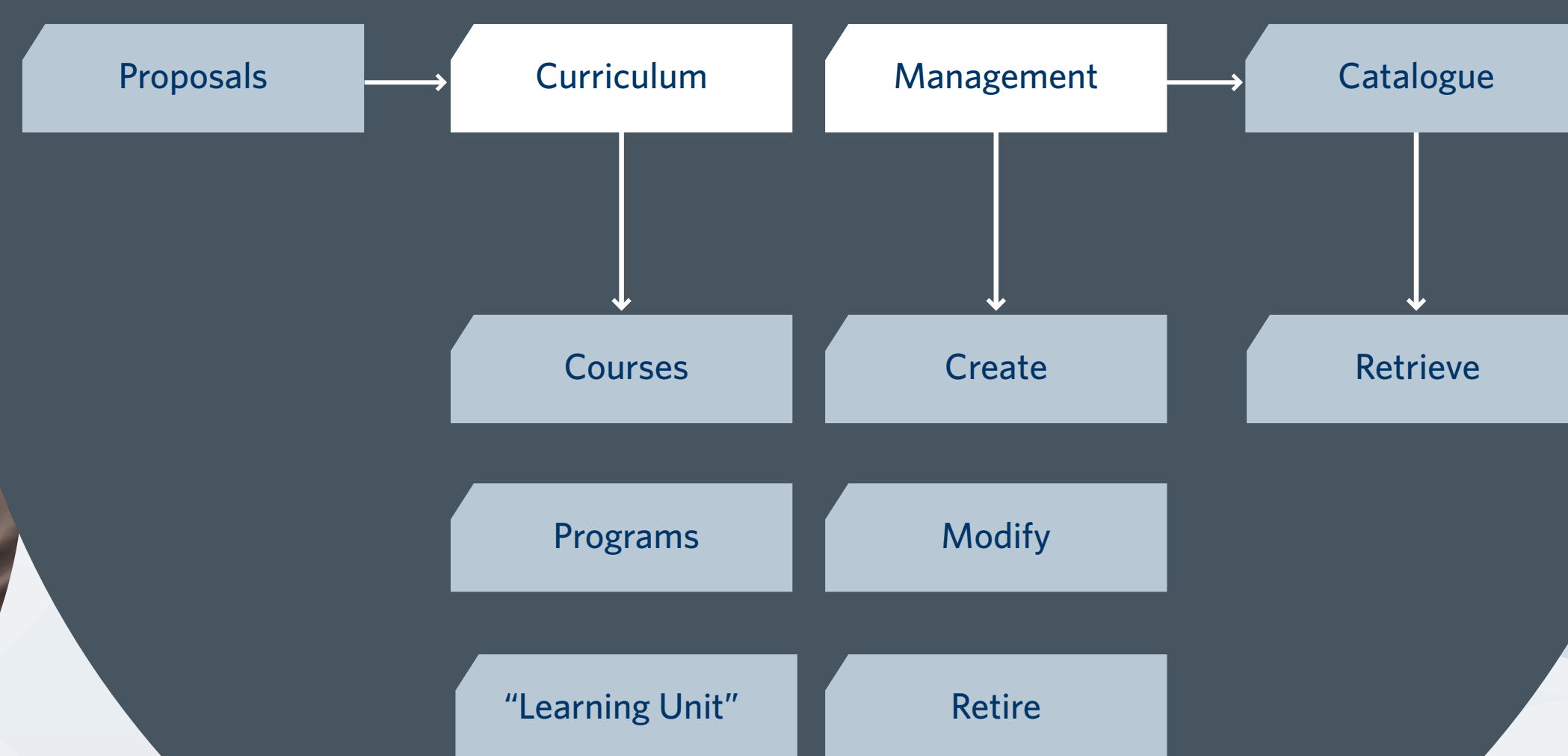


The CDM module will set the stage for:

-  Improved and **simplified user experience** (better screens, superior ease-of-use)
-  Elimination of paper processes to save manual routing and to **streamline development and approval of new curriculum**
-  **Collaboration** across departments and groups
-  **Extending the master repository** of all learning experiences at UBC
-  Increased **tracking functionality** (for proposals, required documents, approvals)
-  Providing flexible ways to **retrieve information** from the course catalogue
-  **Flexible business rules** and workflow; changes to work processes that are easily accommodated
-  **Advanced workflow** functionality to support **UBC-specific** institutional requirements
-  Support for **new forms of learning**: learning units defined in new ways, e.g., non-academic programs or internships



What is Curriculum Development and Management?



Founders and partners

The Kuali Student consortium consists of:

FOUNDERS

- University of British Columbia
- University of California, Berkeley
- University of Maryland, College Park
- Florida State University
- University of Southern California
- Naval Postgraduate School
- San Joaquin Delta College
- University of Washington

PARTNER INSTITUTIONS

- Massachusetts Institute of Technology
- University of Cambridge
- Carnegie Mellon University

OTHER CONTRIBUTING SUPPORTERS

- The Andrew W. Mellon Foundation



a place of mind

For more information on Kuali Student, please visit www.students.ubc.ca/kuali or contact the Kuali Student @UBC team directly at kuali.student@ubc.ca.